



## Narrow Street, London, , E14 8DW £4,500 PCM

Elms Estates are Hugely Excited to be able to offer To Let this spacious Three Bedroom Penthouse Apartment with Private Terrace.

Ionian Building is situated almost on the banks of the River Thames and next to Limehouse Waterside & Marina offering excellent access to Canary Wharf which boasts an array of Shops, Bars, Gyms and dining experiences and with Limehouse (DLR) Station a short walk away and multiple bus routes into the City, West End and beyond.

The property offers bright and spacious accommodation throughout with Three Double Bedrooms with in built storage, Three Bathrooms, two of which are en suites and an open plan kitchen and living space which leads out on to the private terrace with views of the Thames. The property also benefits from a concierge and allocated secure parking space.

The property is available to move in to Immediately and Internal viewing of this property is essential. Early viewing is highly recommended to avoid disappointment as this is truly one not to be missed.

For more information or to arrange a viewing please do not hesitate to call in and speak with one of our Property Consultants



## Reception/Dining/Kitchen

37'4" x 28'10" (11.4 x 8.8)

## Terrace

49'2" x 22'7" (15 x 6.9)

## Bedroom One

16'4" x 12'1" (5.0 x 3.7)

## En-Suite

## Bedroom Two

16'0" x 11'1" (4.9 x 3.4)

## En-Suite

## Bedroom Three

15'5" x 9'6" (4.7 x 2.9)

## Shower Room

## Material Information

Deposit: £6,923.07

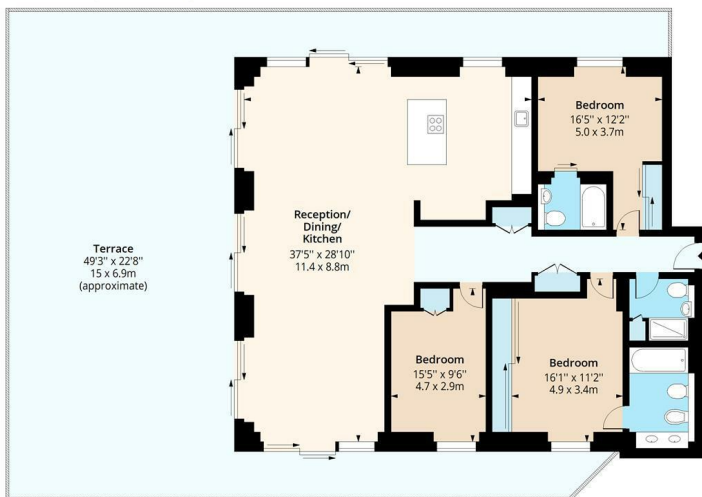
Length Of Tenancy: One Year

Council Tax Band: G



## Narrow Street, E14

Approx. Gross Internal Area 1609 Sq Ft - 149.48 Sq M  
Approx. Gross Terrace Area 1473 Sq Ft - 136.84 Sq M



### Sixth Floor

Floor Area 1609 Sq Ft - 149.48 Sq M



Measured according to RICS IPMS2. Floor plan is for illustrative purposes only and is not to scale. Every attempt has been made to ensure the accuracy of the floor plan shown, however all measurements, fixtures, fittings and data shown are an approximate interpretation for illustrative purposes only. 1 sq m = 10.76 sq feet.

lpaplus.com

Date: 29/8/2025

Energy Efficiency Rating		Environmental Impact (CO <sub>2</sub> ) Rating	
Current	Potential	Current	Potential
60	74	C	C

**Energy Efficiency Rating Legend:**  
 (92 plus) A  
 (81-81) B  
 (69-80) C  
 (55-68) D  
 (39-54) E  
 (21-38) F  
 (1-20) G  
 Not energy efficient - higher running costs

**Environmental Impact (CO<sub>2</sub>) Rating Legend:**  
 (92 plus) A  
 (81-81) B  
 (69-80) C  
 (55-68) D  
 (39-54) E  
 (21-38) F  
 (1-20) G  
 Not environmentally friendly - higher CO<sub>2</sub> emissions

England & Wales EU Directive 2002/91/EC